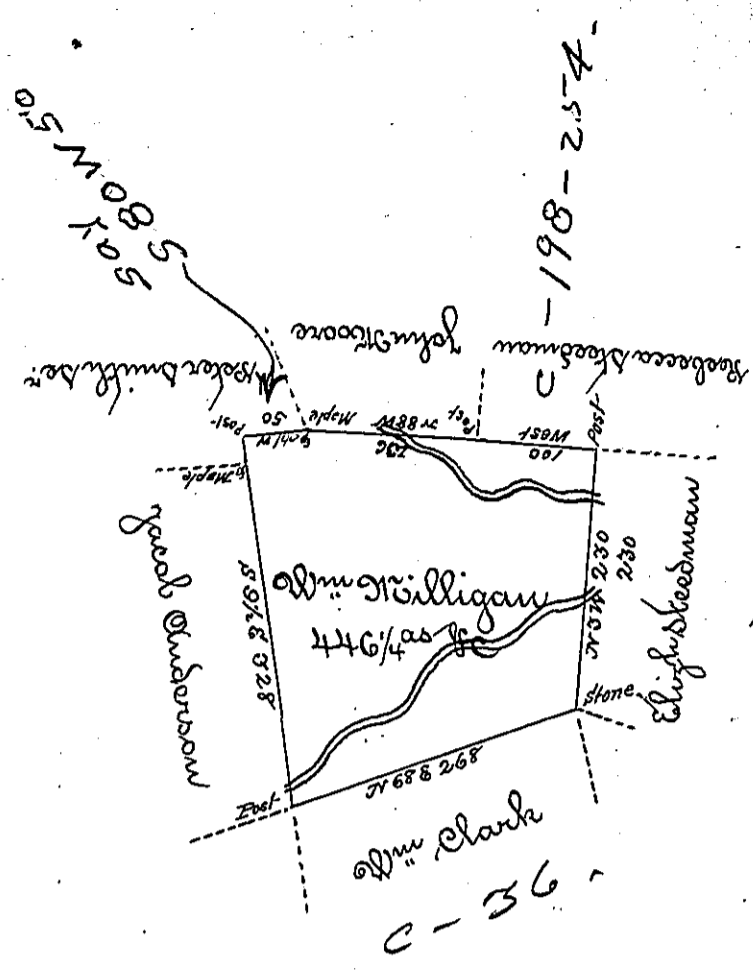


Hazle 2nd 262
Foster -
Luzerne



A. G. 186.

Draft of a tract of land called *_____* situate on the waters of Hazle Bet
 (comprehensible) in the County of Northum^r containing four hundred & forty
 (obliterated) & allowe surveyed for Wm Willigan the 15th day of October 1793
 by virtue of a warrant dated the 13th day of June 1793

Do
 Daniel Brodhead Esq^r }
 Surveyor Genl }

By Wm Gray D. D.

IN TESTIMONY that the above is a copy of the original remaining on file in the
 Department of Internal Affairs of Pennsylvania, made con-
 formably to an Act of Assembly approved the 16th day of
 February, 1833. I have hereunto set my Hand and caused
 the Seal of said Department to be affixed at Harrisburg, this

second _____ day of June 1896

James Watta
 Secretary of Internal Affairs.